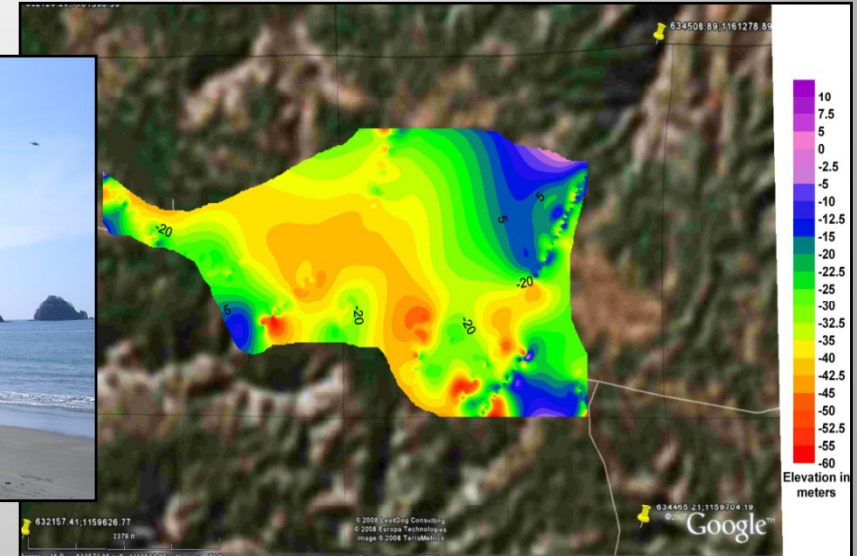




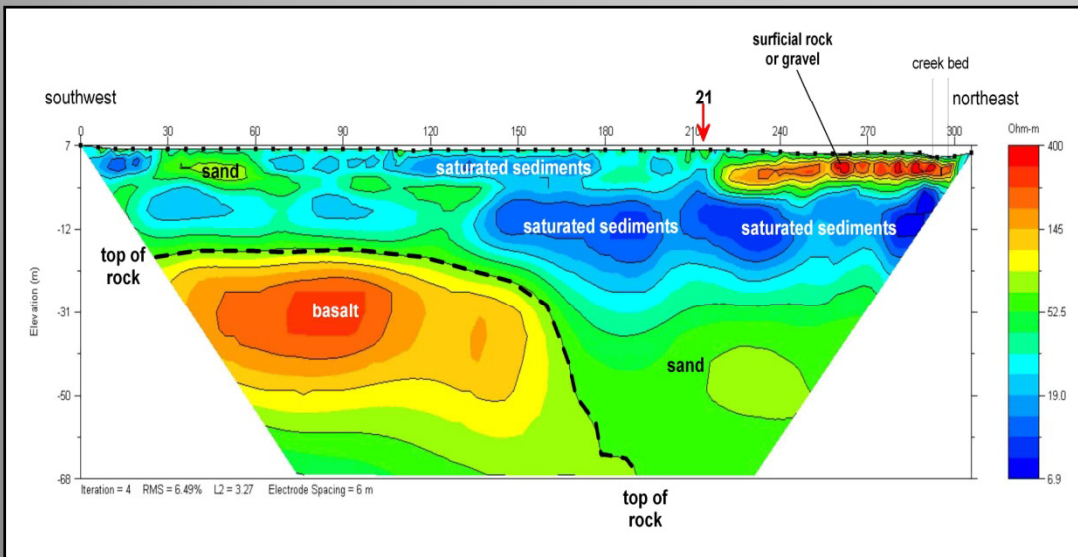
# Geophysical Mapping of the Northwest Coast of Costa Rica for Water Supply Development



Locations of MER Transects Across the Project Site



Contour of the aquifer thickness across the area of potential water supply, generated from the MER data



Representative MER transect depicting an in-filled fracture zone within the bedrock

Our company was contracted to use our geophysical mapping equipment for the purposes of developing a fresh or desalination water supply source along the coast of northwest Costa Rica. Electrical resistivity surveys were used to determine the thickness of the aquifer, the location of the fresh/salt water interface, the depth of the bedrock, and to aid in the design of a comprehensive water supply system