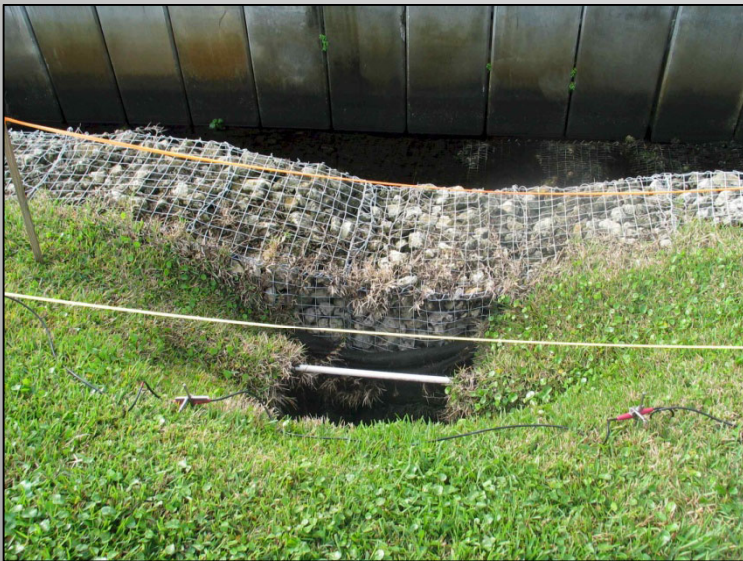




Mapping Sinkhole Collapse in Public Roadway

Our company was contracted to perform a geophysical investigation to define the boundaries of a sinkhole that had opened near a retention drainage system along a major roadway in Palm Harbor, FL. NSN performed this initial geophysical investigation using our Supersting R8 resistivity/IP unit produced by Advanced Geosciences, Inc. A series of 5 transects were performed over and parallel to the sinkhole extending from either side of the feature. This investigation ultimately led to a comprehensive Cone Penetrometer Testing program which validated anomalies discovered during the geophysical phase of this project. This emergency project was completed at the request of Pinellas County Department of Public Works and with the cooperation of the Florida Department of Transportation.

Sinkhole Collapse Feature



MER Transect in Roadway



MER Transect Inverted Resistivity Profile

